

VisNetic Firewall Installation Guide

Preparing for Installation

To ensure a smooth and trouble-free installation of the VisNetic Firewall, there are some steps that you must take before running the setup program.

Record Your TCP/IP Settings

NOTE: This step is critical if you are installing onto an NT4 computer!

During the installation of VisNetic Firewall, you will be asked questions regarding the usage of each of the network adapters in your computer. In order to answer these questions, before you begin the installation you should record the following information about each adapter in your system:

- **Adapter Name:** record the name of the adapter as it appears in your Windows Network properties
- **Connection Type:** is this adapter connected to your internal LAN or to your Internet connection?
- **TCP/IP Settings:** record the IP address(es), DNS Server settings, Gateway setting

HINT: A quick way to collect the adapter name and TCP/IP settings is to save the output from the Windows 'ipconfig' command (this command is not available on Windows 95).

Open the Command Prompt (or the MS-DOS Prompt on Windows 98 systems)

Type in the following:

```
ipconfig /all > tcp.txt
```

This will output the TCP/IP settings for all adapters in your system to a text file called 'tcp.txt'. You can then open this file in Notepad and print it out for reference during the installation. If you have 2 adapters with the same name, the order that they appear in the ipconfig output will be the same order that they are detected during the VisNetic Firewall installation.

Formulate a Security Policy

Before installing VisNetic, you should have a clear picture of the security policy that you want the firewall to enforce. If you are installing VisNetic Firewall on an Internet server, what service(s) do you need to make available to the public? Are you running a web server, email server, FTP server?

If you are installing VisNetic Firewall on a computer that requires outbound access to the Internet, what software do you want to allow to communicate? Do you require browser access, FTP client access, remote control access?

Because (by default) VisNetic Firewall works on the premise that all traffic will be blocked unless you specifically allow it, knowing what you want to permit through the firewall is essential to ensuring that the firewall is blocking unwanted traffic, while still allowing access to the Internet services that you require.

Begin the Installation

Once you have completed the above steps, you are ready to begin. To start the installation, double click on the setup file that you downloaded from the VisNetic Firewall web site.

Setup: Welcome Screen & License Agreement

When you execute the VisNetic Firewall setup file, you are presented with a Welcome Screen. It is recommended that you exit all other Windows programs before continuing with the installation. If you have other programs running, click the Cancel button to exit the installation, exit all other programs, then rerun the VisNetic Firewall setup file.

If you have no other Windows programs running, click the Next button to continue with the installation.

You will then be presented with the End User License Agreement.

Once you have read over the End User License Agreement, if you agree with the terms of the license click the "I agree....." radio button and click Next to continue.

Setup: User Information

On the User Information screen, enter your Name and Company Name. If you have purchased a license, enter it into the Registration Key field. If you are evaluating VisNetic, leave the Registration Key field blank and click the Next button.

If you have left the Registration Key field blank, you will be presented with a screen where you can choose to evaluate either the Workstation or the Server Version of VisNetic Firewall.

Important: If you are installing VisNetic Firewall onto a computer running NT4 Server or Windows 2000 Server, you must choose the Server Version. If you are installing onto any other operating system, you can choose to evaluate either the Server or Workstation Version.

Setup: Installation Directory

The default installation folder for VisNetic Firewall is
c:\Program Files\Deerfield.com\VisNetic Firewall.

If you would like to install VisNetic Firewall into a different folder, type the new location into the text field, or click the Browse button to select an installation folder.

Troubleshooting Tip: If you are installing VisNetic Firewall onto a Windows NT4 computer and receive a "Setup" error during installation, run setup again and install VisNetic Firewall into a path that does not include spaces in the folder name (i.e. c:\VisNetic). The fact that some NT4 systems have difficulty with spaces in folder names is a well documented issue with Windows NT4.

Setup: Shortcut Folder

VisNetic Firewall setup will create a Start Menu Folder that contains all of the program icons for VisNetic Firewall. By default, a Deerfield.com submenu will be created off of the Programs menu, with an VisNetic Firewall folder within it. If you would like to change the name or location of the VisNetic Firewall shortcut folder, type a different name into the text box, or click the down arrow to select an existing folder to place the VisNetic Firewall icons into.

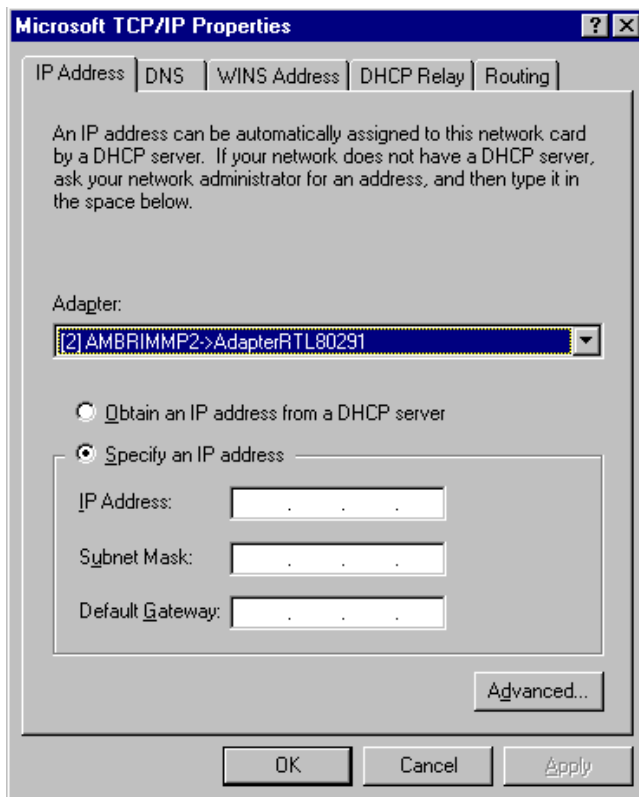
Setup: Ready to Install

Once you click the Install button on the Ready to Install screen, the setup program will begin copying files to your system and installing the necessary drivers and support files.

IMPORTANT! NT Users Read This! If you are installing onto an NT4 computer and have not completed the pre-installation steps, please Cancel the installation and gather the necessary information before beginning. On NT4, during this portion of the installation you will be prompted to enter in the TCP/IP settings for each network adapter in your system. If you have not documented this information before beginning the installation, you will not know how to fill in the screens that will be presented to you.

Windows NT4 Installations

When installing VisNetic Firewall onto Windows NT4, after setup has copied the necessary files, you will be prompted to configure the TCP/IP settings for the VisNetic Protocol Driver for each network adapter in your system.

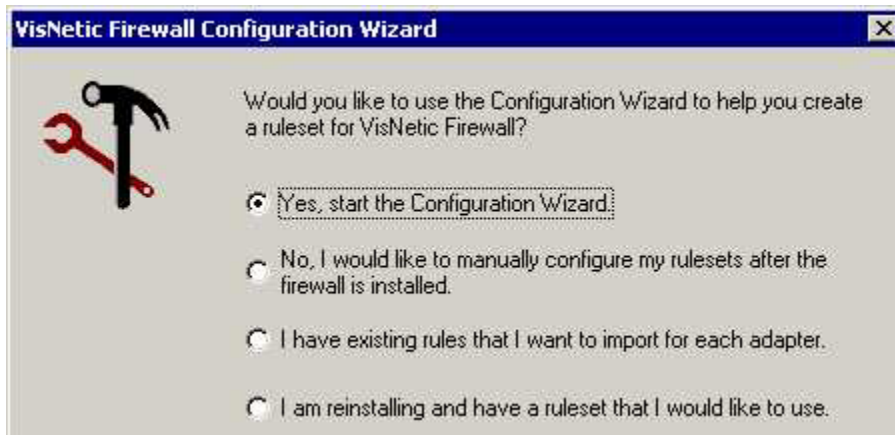


Using the notes that you took in the preinstallation steps, configure the IP Address, Subnet Mask, and Default Gateway for the network adapters that is displayed in the dropdown box. If you have more than one IP address assigned to a particular adapter, click the Advanced button to enter the additional IP address(es).

After configuring the first adapter, use the dropdown arrow to select the next adapter (if present) and configure it according to your notes. Once you have completed the configuration for all adapters in the drop-down box, click the OK button to continue with the installation.

Configuration Wizard Selection

The VisNetic Firewall setup program includes a Firewall Configuration Wizard that can be used to help you configure your firewall.



On this screen, you are presented with 4 choices:

Yes, start the Configuration Wizard – selecting this option is the best choice if you are installing VisNetic Firewall for the first time. The Configuration Wizard will ask you a series of questions, and automatically configure VisNetic Firewall with a set of rules for each adapter in your system by using the information that you supply.

No, I would like to manually configure my rulesets after the firewall is installed – this option is for use by advanced users who are comfortable with manually creating rules. Selecting this option will result in VisNetic Firewall being installed with no rules and all traffic blocked by default.

I have existing rules that I want to import for each adapter – use this option if you have *.rls rules files from a previous installation (or converted from ConSeal) that you would like to import onto your network adapters. This option is useful if you are moving a firewall configuration from one computer to another, or if you have created a set of rules that you know will be appropriate for the configuration of adapters in this computer.

Once you choose this option and click the Next button, you will be prompted to Browse for a *.rls file for each adapter in your system.

I am reinstalling and have a ruleset that I would like to use – use this option only if you have previously saved a *.rul VisNetic Firewall ruleset from this same computer and would like to reinstall using the same set of rules and configuration. After choosing this option and click the Next button, you will be prompted to enter a path to the *.rul ruleset file that you would like to use. If you are upgrading, your current ruleset will be automatically entered.

NOTE: a ruleset file cannot be shared across VisNetic Firewall installations, as they contain adapter-specific information. To share rules between VisNetic Firewall installations, you would export rules from the first installation, then use "I have.....rules that I want to import..." option above to import these rules onto the appropriate adapters.

Configuration Wizard Step 1 – Computer Connections

The first step in the Configuration Wizard asks you if your computer is connected only to the Internet, or to a Local Area Network (LAN) as well.

Your answer to this question will help the Configuration Wizard determine what additional questions to ask.

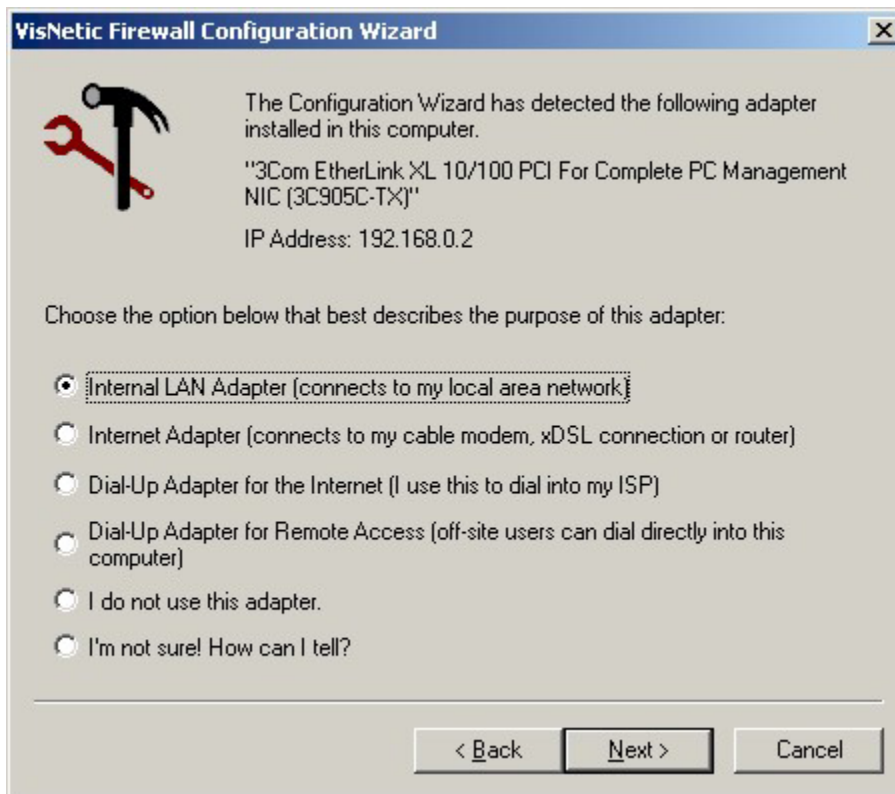
If you are installing VisNetic on a stand-alone computer, choose the first option "No, this computer is connected only to the Internet".

If you are installing VisNetic on a computer that communicates with a Local Area Network (LAN) as well as having a connection to the Internet, choose the second option. You will then be asked if your computer acts as a gateway for other computers on the network. A gateway computer has some type of Internet sharing, NAT, or proxy server software installed on it that permits other computers on the network to access the Internet through the connection on the gateway computer. If the gateway computer is not connected to the Internet, then no other computers on the network can access the Internet. Gateway computers will have at least 2 network adapters in them, one connecting to the Local Area Network (LAN), and the other to Internet connection (i.e. network card that connects to the cable modem, DSL modem, router, etc.).

Configuration Wizard Step 2 – Adapter Configuration

Once you have completed the first series of questions, the Configuration Wizard then begins to detect all of the network adapters in your computer and ask some questions about each one. A network adapter could be a modem, an Ethernet network card, a virtual VPN adapter, or a virtual PPPoE adapter (used for some DSL connections).

For each network adapter detected, the Configuration Wizard will present a dialog box, prompting you to specify what the adapter is used for. Once you have completed the questions for one adapter, the Wizard will detect the next adapter (if present) and again present you with this screen. After all adapters have been detected and configured, you will see a summary screen that gives you the opportunity to make changes to the rules that will be applied to each adapter (see Wizard Step 3).



The Wizard will select its ‘best guess’, determined by the type of adapter that is detected and by the IP address that is assigned to the adapter. If the selection presented does not appear correct, change it to one that more closely matches the purpose of the adapter.

If you have more than one network card in your computer, you will need to closely examine the name of the network card and the IP address to ensure that you are configuring each one correctly. Compare this information to the notes that you took during the preinstallation steps to determine which network card is for the LAN, and which is connected to the Internet.

Internal LAN Adapter

Select this option if the network adapter listed is connected **ONLY** to your local area network. After choosing this option and clicking Next, you will be presented with a screen asking you if you want to permit all traffic over this LAN adapter, or only certain traffic.

Option 1: Do Not Restrict Access

In most cases, you will want to allow all traffic to pass freely over an internal LAN adapter, and only be filtering traffic on your external Internet adapters. If this is the case choose the first option, and the Wizard will configure this adapter to Allow All Traffic.

Option 2: Restrict Access

In some cases, you will want to allow only certain local network traffic to be permitted to pass over this LAN adapter. After choosing the second option, "I want to restrict access.....", you will be presented with a screen listing possible types of traffic that you may want to allow. Click the box beside all services and applications that apply. A few of the selections may require some explanation:

DHCP (for dynamic IP addresses): select this option if this computer receives an IP address from a DHCP server on your network.

DHCP Server: select this option if this computer is acting as a DHCP server which assigns IP addresses to the other computers on the LAN.

NetBIOS: selecting this option will put rules in place that will allow this computer to communicate with other computers on the network for the purposes of file and printer sharing using NetBIOS over TCP.

Option 3: Block all Access

Choosing this option will result in the firewall configuring this adapter to block all traffic on this adapter.

Internet Adapter

Select this option if the network adapter listed provides you with your connection to the Internet (i.e. connects to your cable modem or router). After clicking the Next button, you will be asked whether you run client or server applications (or both) on this computer.

For each selection you choose, you will be presented with a list of applications. The Wizard will attempt to detect which applications are installed, however you will need to look carefully at the list, selecting any that the Wizard did not detect, and unselecting any that were detected, but which you do not use.

Client Applications

Depending on which options you choose in the Client Applications window, you will be prompted to provide some further information that will assist the Wizard in creating a tight set of rules that only apply to the specific servers that you need to communicate with.

DNS Servers: the Configuration Wizard will attempt to detect the DNS Servers that you have configured for the network adapter. If it cannot detect your DNS settings, you have the opportunity to enter them here. The Wizard will use this information to create DNS rules that apply only to the DNS servers with which you communicate. If you do not know the IP addresses of your ISP's DNS servers, just leave these fields blank, and the DNS rules will be configured to allow your computer to communicate with all DNS servers.

Email Servers: if you have indicated that you use email client software on this computer, the Configuration Wizard will prompt you to enter the name or IP address of the POP3 (incoming) and SMTP (outgoing) mail servers. This information will enable the Wizard to create email rules that are specific to the servers you use to collect and send email. If you use more than one set of mail servers on this computer, leave these fields blank and the rules created will allow you to access any mail server. You can manually edit the email rules after the firewall is installed to make them more specific.

Server Applications

If you have indicated that you host one or more Internet servers on this computer, you will be presented with a list of possible servers that you could be running. The Wizard will attempt to detect any servers that you have installed, but you should carefully read over the selections to be sure that you are actually using the services that were detected, and to select any additional ones that were not automatically detected.

Dial-Up Adapter for the Internet

Select this option if the Dial-Up adapter detected is the modem that you use to dial into your ISP for Internet access. After clicking the Next button, you will be asked whether you run client or server applications (or both) on this computer.

Refer to the "Client Applications" and "Server Applications" sections above for an explanation of the next configuration screens that will appear.

Dial-Up Adapter for Remote Access

Select this option if the Dial-Up adapter detected is used ONLY by remote users to dial into this computer. If you connect to the Internet with this modem, and other users can access this computer using PCAnywhere or NetOp, you would not choose this option, but the "Dial-Up Adapter for the Internet" selection above. After you select this option and click the Next button, you will be asked whether you want to restrict or allow access on this adapter.

If you choose not to restrict access, the adapter will be configured to allow all traffic.

If you choose to restrict access, you will be asked to choose the type of traffic that you want to allow through the Dial-Up connection. From this list, choose the application(s) that the remote users will be dialing in to use. If you do not see an

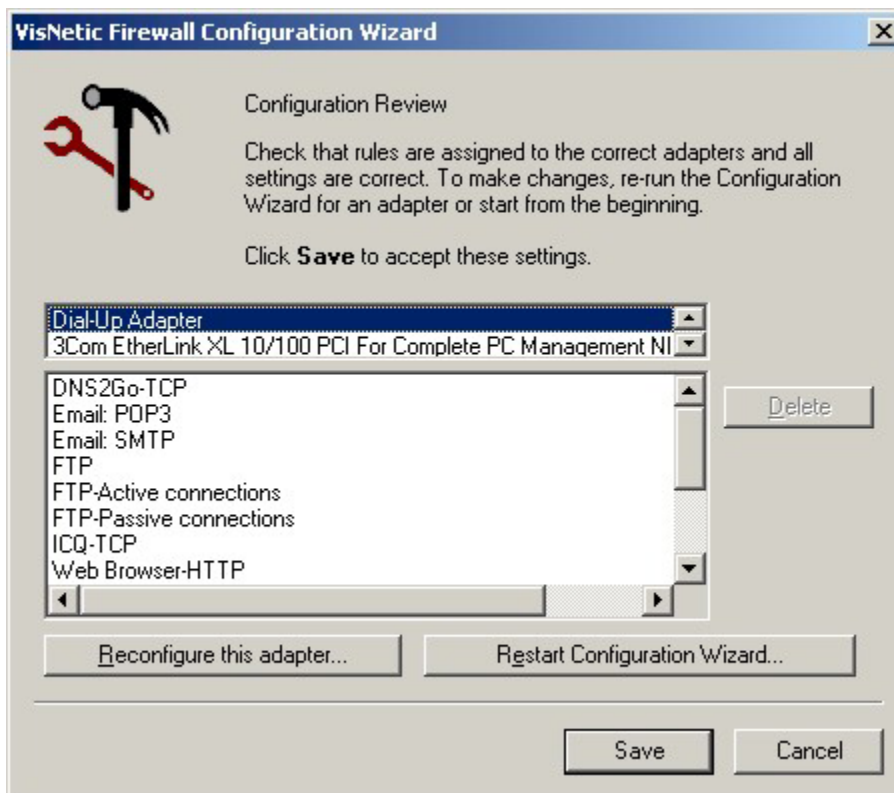
appropriate match, just leave all selections blank. You can edit the rules for this adapter after installation is complete.

I do not use this adapter

Select this option if the adapter detected is not used. For example, you may access the Internet using a cable connection, but you also have a modem installed in the computer. When the Wizard detects the modem, you would choose this option. After selecting this option and click the Next button, you are presented with the following screen informing you that the adapter will be set to block all traffic.

Wizard Step 3 – Configuration Review

After all adapters in your computer have been detected and configured, the final step in the Configuration Wizard is the Configuration Review which presents you with a summary of the rules that will be applied to each adapter in your computer. Your adapters are listed in the small window, clicking on each will show you the rules in the bottom window that will be assigned to that adapter.



To delete a rule, click on it in the list of rules and click the Delete button.

If you discover that you have made an error, you can choose to either Reconfigure one particular adapter (select the adapter in the top small window, then click the "Reconfigure this adapter" button), or you can run through the entire Wizard from the beginning by clicking the "Restart Configuration Wizard" button.

Once you are satisfied with the configuration, click the Save button to continue with the installation button.

Clicking the Cancel button will only cancel the Configuration Wizard, the firewall will still be installed, but with no rules (all traffic will be blocked).

Setup: Firewall Startup

After you have completed the adapter Configuration Wizard, setup will ask you if you want the firewall to start automatically. For optimum security, it is recommended that you choose "Yes" here. This setting can later be changed at any time from within the VisNetic Firewall user interface.

On Windows NT, Windows 2000 and Windows XP computers, choosing "Yes" will result in VisNetic firewall being run as a system service. On Windows 95/98/ME it will be started from the \RunServices folder in the Windows registry.

Setup: When Not Running

The last question you are asked during setup concerns what action should be taken when the firewall is not running. VisNetic Firewall's ability to block all traffic when the firewall is not running gives you total security coverage at all times, including during the boot process and after you have shut the firewall down.

To avoid any problems, it is recommended that during the installation you set this to "Allow". Once you have the firewall up and running, you can change this to "Block".

Setup: Finish

Once the installation is complete, you will be prompted to reboot the computer. You must do this in order to load the firewall driver before you will be able to use VisNetic Firewall.